

HarperCollinsChildren'sBooks  
presents



# STARFELL

## Willow Moss and the Lost Day



## Character Interview

"'Moreg Vaine,' said the woman with casual nonchalance, as if declaring yourself the most feared witch in all of Starfell was an everyday occurrence. Which, to be fair, for Moreg Vaine, it probably was. 'Oh dear,' said Willow, whose wobbling knees had proved correct.

Moreg Vaine's mouth curled up.

In years to come Willow would still wonder how it was possible that she had managed to keep her feet on the ground when a whisper would surely have knocked her over.

Yet never in Willow's wildest fantasies of meeting the infamous witch Moreg Vaine could she ever have imagined for a moment what happened next.

'Cup of tea?' suggested Moreg." (Page 17)

**Task:** Imagine meeting one of the characters from the story. What would you ask them? What would you talk about? Write an interview with a series of questions that you would ask a character of your choice. Then, with a partner take turns to role play as each other's chosen characters and answer the interview questions in role.

### Ideas:

- \* Questions about their family, friends or daily life
- \* Questions relating to a particular storyline or event
- \* Questions about their opinions on current affairs or other characters

Use the interview sheet on the next page to help you.



### ENGLISH CURRICULUM LINKS (KS2)

*Pupils should be taught to:*

*Understand what they read by:*

- \* Asking questions to improve their understanding
- \* Drawing inferences such as inferring characters' feelings, thoughts and motives from their actions, and justifying inferences with evidence

# Character to interview:



Question 1:	Answer:
Question 2:	Answer:
Question 3:	Answer:
Question 4:	Answer:
Question 5:	Answer:
Question 6:	Answer:

HarperCollinsChildren'sBooks  
presents



# STARFELL

Willow Moss and  
the Lost Day



## Character Profile

“‘Monster’ was a bit of a stretch. Oswin was, in fact, a kobold, a species that only *just* fell into the classification of monster. But it was best not to tell Oswin this as he was very proud of his monster heritage.

Through groggy slits that exposed luminous orange eyes that hadn't seen daylight for several weeks Oswin was glaring at her now. His lime-green fur was turning a ripe pumpkin colour in his outrage and his bright green-and-white striped tail electrified with indignation.” (Page 40)

**Task:** Choose one of the characters from story and create a character profile for them. Use information from the text and your own imagination to create the profile.

Ideas to think about:

- ✦ What does he/she look like?
- ✦ What does he/she do?
- ✦ What is his/her personality like?
- ✦ What are his/her favourite foods or hobbies?
- ✦ What are the things that he/she doesn't like?
- ✦ What family does he/she have?



### ENGLISH CURRICULUM LINKS (KS2)

*Pupils should be taught to:*

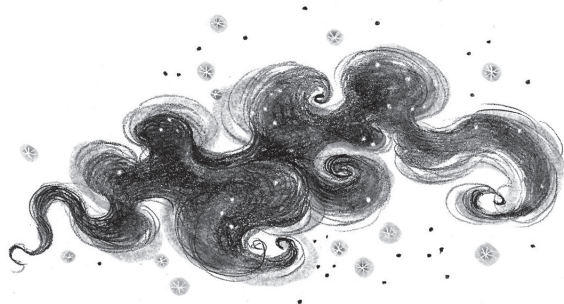
*Maintain positive attitudes to reading and understanding of what they read by:*

- ✦ *Increasing their familiarity with a wide range of books, including myths, legends and traditional stories, modern fiction, fiction from our literary heritage, and books from other cultures and traditions*

*Understand what they read by:*

- ✦ *Drawing inferences such as inferring characters' feelings, thoughts and motives from their actions, and justifying inferences with evidence*

# Character Profile



Picture:	Name:
	Age:
Physical description:	Personality:
Likes:	Dislikes:



HarperCollinsChildren'sBooks  
presents

# STARFELL

Willow Moss and  
the Lost Day



## Comic Strip

"Troll country lay in a somewhat dented and bruised corner of Starfell few dared visit. Not surprising when its inhabitants saw carrying a weapon studded with nails and spikes as part of their national identity. It certainly wasn't your top choice for a holiday destination. In fact, very few people aside from trolls ventured to Troll Country unless they were rather desperate, or very stupid, or, like Willow and her friends, desperate but also in the company of a dragon. Even if he wasn't really the dangerous sort, the trolls wouldn't know that, or so Willow hoped." (Page 217)

**Task:** Choose a chapter, sub-story or event from within the story and rewrite it in your own words, in a comic strip style.

Ideas to think about:

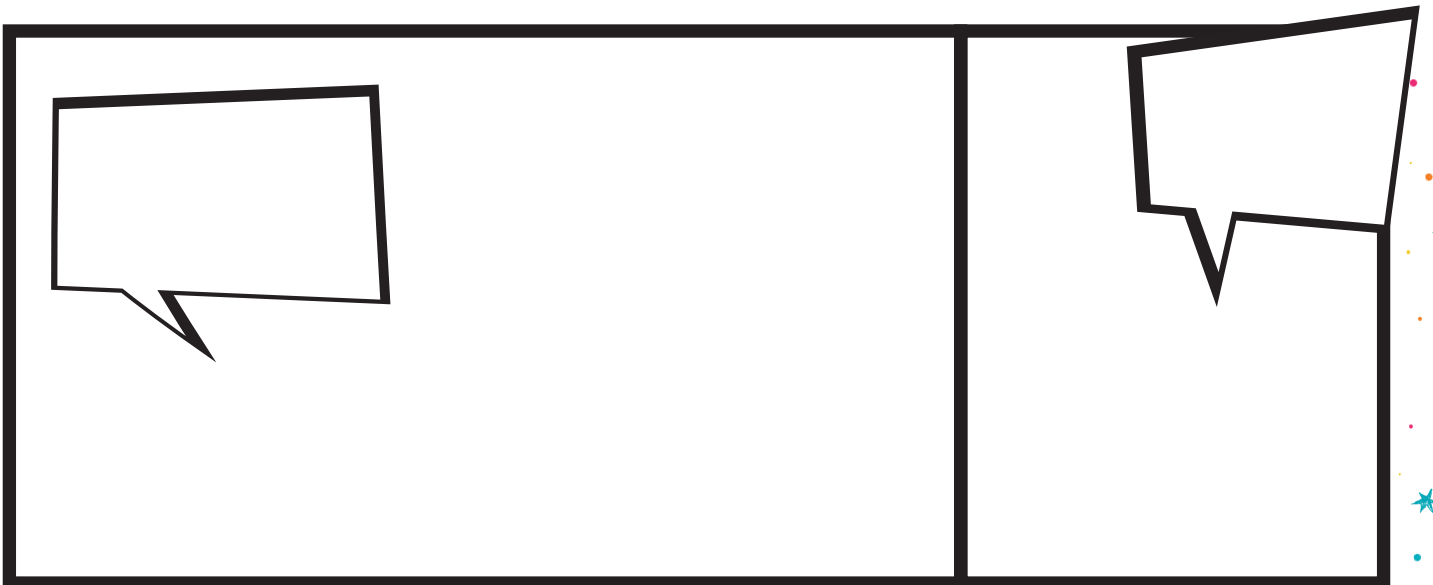
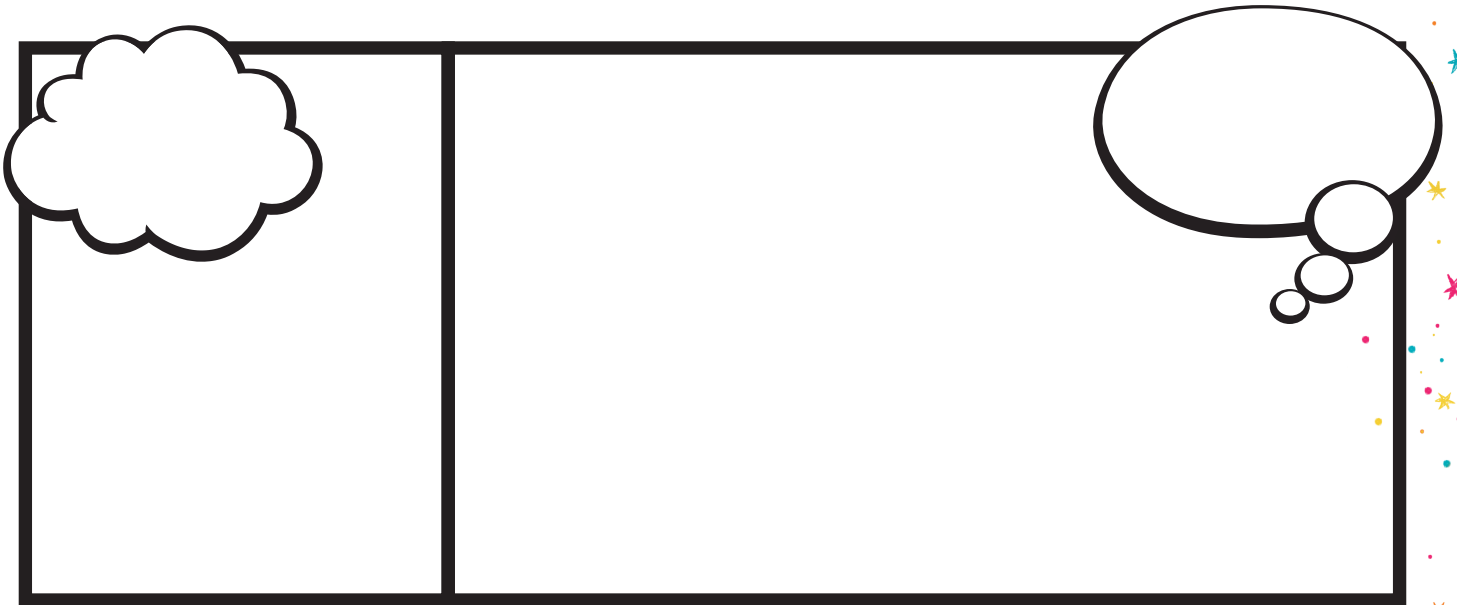
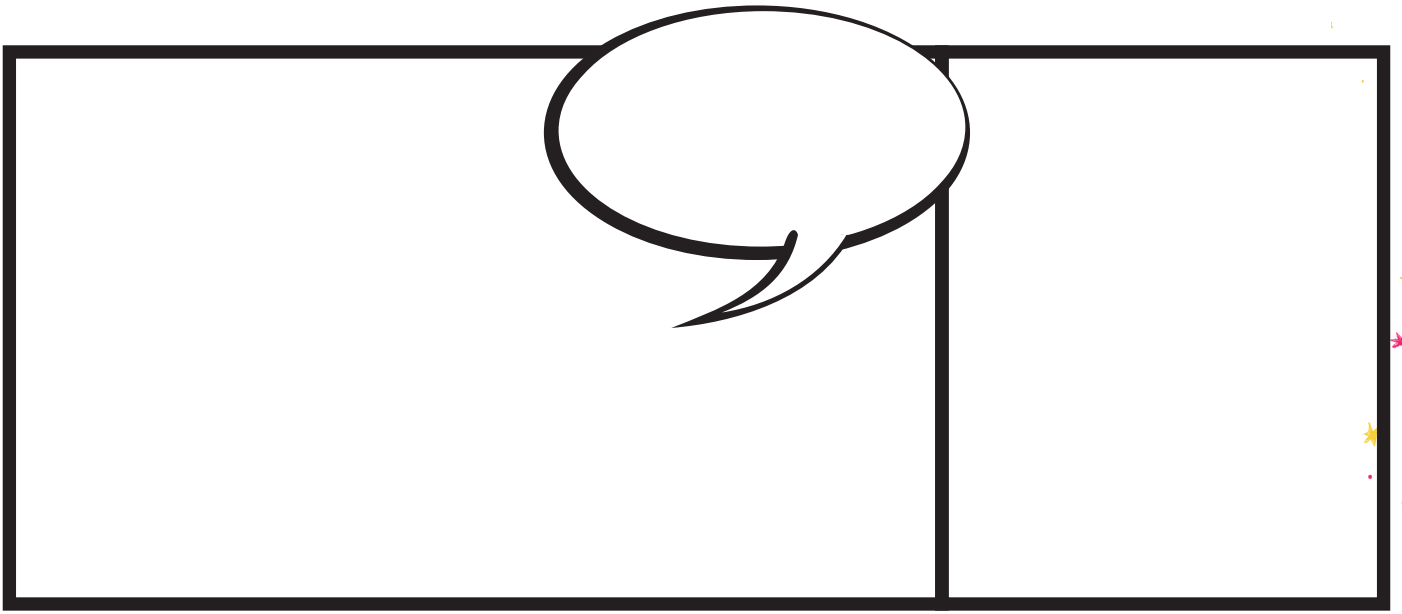
- ✦ Think about how many sections there are in the comic strip and plan how you will divide the story up
- ✦ Use pictures, action words and speech bubbles to show action
- ✦ Think about the characters' feelings



### ENGLISH CURRICULUM LINKS (KS2)

Understand what they read, in books they can read independently, by:

- ✦ Summarising the main ideas drawn from more than one paragraph, identifying key details that support the main ideas
- ✦ Asking questions to improve their understanding



HarperCollinsChildren'sBooks  
presents



# STARFELL

Willow Moss and  
the Lost Day



## Design a Spell

"Willow took one last look at Moreg's body, tears coursing down her face, then she read the counter-spell on the scroll aloud as quickly as she could.

*'What was taken now restore,  
Put back what was lost before,  
Return the day to its rightful space,  
Time before time and past in place.'*

A blast of silvery light knocked her off her feet, the scroll crumbled to dust in her hand, and suddenly everyone around her was spinning inside a reeling tornado."

**Task:** Think about the spells used in the story. Design a spell that would be useful to Willow or to you.

Ideas to include:

- ✦ How would the spell help you?
- ✦ What would the spell need to make it work?
- ✦ What would you say for the spell to work?
- ✦ What could go wrong with the spell?
- ✦ What side effects could the spell have?

Plan your spell on the next page.



ENGLISH CURRICULUM LINKS (KS2)

Understand what they read, in books they can read independently, by:

- ✦ Checking that the text makes sense to them, discussing their understanding and explaining the meaning of words in context
- ✦ Asking questions to improve their understanding

Spell purpose:

Spell words:

Other ingredients/criteria for spell to work:

Description of result of successful spell:



HarperCollinsChildren'sBooks  
presents



# STARFELL

## Willow Moss and the Lost Day



## Fan Quiz

Test your knowledge of the story. See how many quiz questions you can answer correctly. Use the book to help you find the answers.

(Hint: the question number corresponds to the chapter containing the answer)

Questions	Your answers
1. What are Camille Moss's magical powers?	
2. What was Moreg Vaine's sister called?	
3. What is Willow Moss's father's job?	
4. What is the term used to describe a group of ravens?	
5. What do Mementons make?	

Questions	Your answers
6. What is the StoryPass?	
7. Why was Amora Spell packing a wheelbarrow when Willow first met her?	
8. What did Willow discover in the Sometimes house?	
9. Why did Feathering want to go with Willow?	
10. Who is the forgotten teller?	
11. What was the legend of the Lost Spells?	
12. What is the most special plant ever grown?	
13. Who did Willow see at the Midnight Market?	
14. What does a hag stone do?	

Questions	Your answers
15. Which potions does Willow use on her mother and sister?	
16. Why couldn't Calamity go home?	
17. What did the troll chief give Willow?	
18. What does Moreg's house look like?	
19. Why did Silas hate his father?	
20. How does Willow make Oswin explode?	
21. Why was recovering Tuesday a sad event for Willow?	

*ENGLISH CURRICULUM LINKS (KS2)*

*Understand what they read by:*

- ✱ *Checking that the book makes sense to them, discussing their understanding and exploring the meaning of words in context*
- ✱ *Asking questions to improve their understanding*
- ✱ *Summarizing the main ideas drawn from more than one paragraph, identifying key details that support the main ideas*

HarperCollinsChildren'sBooks  
presents



# STARFELL

## Willow Moss and the Lost Day



## Letter to Granny Flossy

“Willow shut her eyes and held the fisher’s net up to the sky, and suddenly a wave of green briny water cascaded from the heavens, and a colossal hairy fish with a set of razor-sharp, needle-like teeth landed with a whoosh into the net and began flopping around wildly, drenching them all. The hag jumped back, all traces of humour fading fast. A bit of spilled potion hit the ground and began to smoke in a dark red puff.” (Page 114)

**Task:** Imagine you are Willow. Write a letter to Granny Flossy after your encounter with Amora Spell. Tell Granny Flossy what happened when you met Amora, what was said and how you felt.

Use information from the story and your own imagination.

Ideas to include:

- ✦ What are you writing to say?
- ✦ Why do you need to say that?
- ✦ How might things have ended differently?
- ✦ How much detail will you include in explaining?



### ENGLISH CURRICULUM LINKS (KS2)

Understand what they read, in books they can read independently, by:

- ✦ Checking that the text makes sense to them, discussing their understanding and explaining the meaning of words in context
- ✦ Asking questions to improve their understanding



HarperCollinsChildren'sBooks  
presents



# STARFELL

## Willow Moss and the Lost Day



## Missing Day Events

"Willow gasped. 'What happened?'

'I don't remember!' he cried, lifting his head off the egg. 'I keep trying to – but I can't. I can't remember anything that happened that day. When I told Thundera that she became so angry she burnt down the whole side of the mountain,' he said mournfully. 'And, look, the egg – it's empty; though I don't know how that could have happened. It wasn't empty before, and I don't remember it hatching,' he said." (Page 132)

**Task:** When Tuesday went missing lots of characters were affected. How did the missing day impact on the characters?

You can use information from the story to complete the chart showing how some of the story characters were affected by Tuesday's disappearance.

Ideas to include:

- \* What was the character doing on Tuesday?
- \* What do they remember?
- \* What don't they remember?
- \* How has it impacted on their lives?



### ENGLISH CURRICULUM LINKS (KS2)

*Understand what they read, in books they can read independently, by:*

- \* *Checking that the text makes sense to them, discussing their understanding and explaining the meaning of words in context*
- \* *Asking questions to improve their understanding*



Character	Missing day event
Willow	
Feathering	
Calamity	
Silas	
The Mementons	

HarperCollinsChildren'sBooks  
presents



# STARFELL

## Willow Moss and the Lost Day



### Mystery Word Puzzle

"Most people think being born with a magical power would be a bit of a dream come true. But that's only because they assume that they'd get *exciting* powers, like the ability to fly, become invisible or turn an annoying relative into a pig. They think *magic* is a big feast, where everything is laid out, ripe for the picking." (Page 9)

Read Chapter 1: The Girl Who Found Lost Things

**Task:** Solve the clues to complete the crossword. Can you find the mystery word in the red boxes?

		1								
			2							
			3							
			4							
5										
	6									
			7							
		8								

1. Ethel's surname
2. The sort of person who secretly wished their village had been granted Forbidden status by the king
3. This person recently lifted a plough, donkey still attached, with her mind
4. This person's missing rhinestone spectacles were on her head
5. The village where the Moss family live
6. The most feared witch in all of Starfell
7. Granny's name
8. The story's main character

The mystery word is: \_\_\_\_\_



# Mystery word puzzle ANSWERS

		1	m	u	s	t	a	r	d		
			2	e	t	h	e	l			
			3	c	a	m	i	l	l	e	
			4	p	r	u	d	e	n	c	e
5	g	r	i	n	f	o	g				
	6	m	o	r	e	g	v	a	i	n	e
			7	f	l	o	s	s	y		
		8	w	i	l	l	o	w			



HarperCollinsChildren'sBooks  
presents



# STARFELL

## Willow Moss and the Lost Day



## Newspaper Article

“Willow frowned in confusion. ‘What do you mean? I know it’s not... um, great that Tuesday has gone missing, but it’s not the end of the world, surely? It’s just one day...’  
*A day that no one seems to have missed anyway, so what was the harm, really?* thought Willow. Moreg blinked. ‘Actually, it might be the end of the world if we don’t find it. Whatever happened to last Tuesday may affect the very fabric of Starfell, causing it to unravel slowly, thread by thread.’ Willow’s mouth fell open dumbly as she gasped. She hadn’t realized it could be that serious.”

(Page 28)

**Task** Write a newspaper article about the missing day. You could write at the time that Tuesday has been identified as missing, and the article could include theories about what might have happened. Alternatively, you could write at the time that the story concludes, and the article could include information about who was behind the drama and why they did it. Try to imagine the version of story that would be in the papers.

You can use ideas from the story and your own imagination to write your newspaper article.

Ideas to include:

- \* A catchy article heading
- \* Who was involved in the event?
- \* What happened that was interesting?
- \* Why did that happen?
- \* Where did it all start?
- \* When did it happen?

Write your newspaper article on the next page.

ENGLISH CURRICULUM LINKS (KS2)

*Pupils should be taught to:*

*Maintain positive attitudes to reading and understanding of what they read by:*

- \* *Increasing their familiarity with a wide range of books, including myths, legends and traditional stories, modern fiction, fiction from our literary heritage, and books from other cultures and traditions*

*Understand what they read by:*

- \* *Drawing inferences such as inferring characters’ feelings, thoughts and motives from their actions, and justifying inferences with evidence*



HarperCollinsChildren'sBooks  
presents



# STARFELL

## Willow Moss and the Lost Day



## Play Script

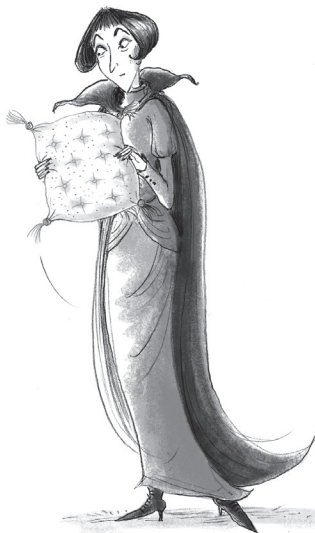
“Willow drew the StoryPass out of her pocket and went pale. ‘Oh dear. It says “There be Dragons”,’ she whispered. Her knees started to knock together. A faint ‘eep’ came from Oswin’s direction. Then out of the swirling mist a voice like the wind howling on a cold night corrected her. ‘Dragon.’ ‘P-pardon?’ stammered Willow, who took a step forward in spite of her knees, her eyes straining against the swirling mist.” (Page 128)

**Task:** Choose an exciting scene from *Starfell: Willow Moss and the Lost Day* and rewrite it into a play script. Then act it out with your friends.

Ideas to include:

- ★ Who are the characters in this scene?
- ★ What is the setting for this scene?
- ★ What happens in this scene? Will you include all the details in your script or just the main bits?
- ★ Will you use a narrator?
- ★ What actions might you like the characters to perform? Remember to give them stage directions.

Write your play script on the next page.



### ENGLISH CURRICULUM LINKS (KS2)

*Pupils should be taught to:*

*Maintain positive attitudes to reading and understanding of what they read by:*

- ★ *Preparing poems and plays to read aloud and to perform, showing understanding through intonation, tone and volume so that the meaning is clear to an audience*

*Understand what they read by:*

- ★ *Drawing inferences such as inferring characters’ feelings, thoughts and motives from their actions, and justifying inferences with evidence*

CROSS-CURRICULAR LINKS: DRAMA

Write your play script here.

CHARACTERS

---

---

---

---

SCENE

---

Setting

---

---

SPEAKER 1

---

---

Stage directions:

---

---

---

---

---



HarperCollinsChildren'sBooks  
presents



# STARFELL

## Willow Moss and the Lost Day



## Troll Fact File

"At their gasps she continued. 'That's considered quite a healthy troll relationship. Most troll wives eat their mates when they get too disagreeable, generally sometime within the first year of marriage... See, troll females are often the strongest and most vicious. They're quite a lot bigger and hairier than the males, so they are much more valued. Well, usually. I'm the only girl in my family. As the chief's daughter I was the pride of the clan... until I became their biggest calamity... which is funny, really, because that's actually my name,' she said with a deep sigh." (page 224)

**Task:** What do you know about trolls? What would you like to know? Create a fact file about trolls.

You can use information from the story as well as your imagination to think about trolls. Use the information you collect to create a fact file that could teach others about trolls.

Ideas to include:

- \* What is a troll?
- \* Where can trolls be found?
- \* What habitat do trolls like?
- \* What do trolls eat?
- \* What do trolls need to thrive?
- \* What is daily life like for a troll?
- \* How do trolls behave?
- \* Do trolls have predators?
- \* How dangerous are trolls?

Write your fact file on the next page.

*ENGLISH CURRICULUM LINKS (KS2)*

*Understand what they read, in books they can read independently, by:*

- \* *Checking that the text makes sense to them, discussing their understanding and explaining the meaning of words in context*
- \* *Asking questions to improve their understanding*

Write your fact file here.

# FACT FILE

Main title and introduction:

.....

.....

.....

.....

.....

Fact 1:

.....

.....

.....

.....

.....

Fact 2:

.....

.....

.....

.....

.....

Fact 3:

.....

.....

.....

.....

.....

Fact 4:

.....

.....

.....

.....

.....

Fact 5:

.....

.....

.....

.....

.....



HarperCollinsChildren'sBooks  
presents



# STARFELL

Willow Moss and  
the Lost Day



## Willow's Diary

"They set off up the dark, overgrown path, Willow looking over her shoulder in case anyone was watching. She didn't want another run-in with Amora Spell, that was for sure. But they saw no one.

As they drew closer it became clear that the house was old and dilapidated. It had chipped blue paint and a yellow front door. The garden was wild and covered in brambles. As she neared she saw dozens of colourful teapots fixed beneath the windows like curious flowerpots, with trailing plants spilling out of them." (Page 117)

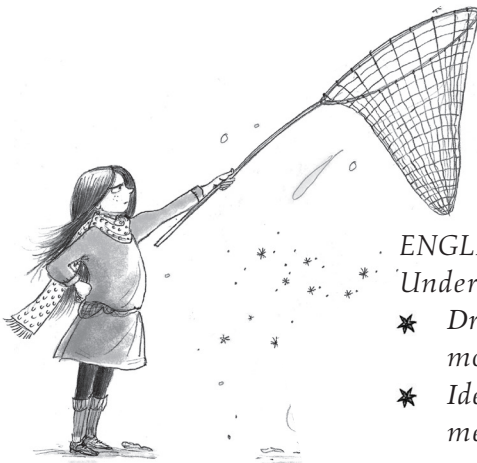
**Task:** Imagine you are Willow Moss. Choose a point in the story and imagine you have some time alone to gather your thoughts and write an entry in your diary. Write about what has happened and how you feel.

Use information from the story and your own imagination.

Ideas to include:

- ★ Where are you going?
- ★ What has happened? How is it relevant?
- ★ Who have you met? What did you think about them?
- ★ What are you planning to do next?
- ★ How do you feel about your mission?

Write your diary on the next page.



### ENGLISH CURRICULUM LINKS (KS2)

*Understand what they read, in books they can read independently, by:*

- ★ *Drawing inferences such as inferring characters' feelings, thoughts and motives from their actions, and justifying inferences with evidence*
- ★ *Identifying how language, structure and presentation contribute to meaning*



HarperCollinsChildren'sBooks  
presents



# STARFELL

## Willow Moss and the Lost Day



### Wordsearch

**Task:** Can you find all of the words below from the book in the wordsearch? The words go down, left to right, or diagonal.

C	J	S	O	M	E	T	I	M	E	S	P	H	F	W
C	A	L	A	M	I	T	Y	I	Q	Z	B	O	E	I
A	K	M	O	R	E	G	V	A	I	N	E	Y	A	L
J	U	N	I	P	E	R	I	Y	S	H	A	G	T	L
A	E	W	O	L	K	A	N	A	O	G	D	R	H	O
M	S	S	R	A	L	J	T	H	B	V	Y	F	E	W
O	S	W	I	N	K	E	Z	P	W	A	H	N	R	M
R	E	S	M	L	U	R	U	B	I	X	I	U	I	O
A	N	B	V	I	A	Q	A	X	C	F	L	Z	N	S
S	T	N	A	R	J	S	Y	I	H	D	L	T	G	S
P	I	C	O	W	B	K	P	D	N	C	S	M	X	G
E	A	S	T	A	R	F	E	L	L	E	X	D	F	N
L	L	T	V	E	R	U	S	H	K	A	E	Q	W	F
L	B	L	U	C	H	I	G	H	M	A	S	T	E	R
G	R	A	N	N	Y	F	L	O	S	S	D	M	V	E

STARFELL  
CALAMITY  
WILLOW MOSS  
CAMILLE

BEADY HILL  
JUNIPER  
HIGH MASTER  
MOREG VAINE  
WOLKANA

GRANNY FLOSSY  
SILAS  
AMORA SPELL  
ESSENTIAL  
OSWIN

RUBIX  
SOMETIMES  
RAINE  
FEATHERING  
VERUSHKA

# Word Search ANSWERS

C	J	S	O	M	E	T	I	M	E	S	P	H	F	W
C	A	L	A	M	I	T	Y	I	Q	Z	B	O	E	I
A	K	M	O	R	E	G	V	A	I	N	E	Y	A	L
J	U	N	I	P	E	R	I	Y	S	H	A	G	T	L
A	E	W	O	L	K	A	N	A	O	G	D	R	H	O
M	S	S	R	A	L	J	T	H	B	V	Y	F	E	W
O	S	W	I	N	K	E	Z	P	W	A	H	N	R	M
R	E	S	M	L	U	R	U	B	I	X	I	U	I	O
A	N	B	V	I	A	Q	A	X	C	F	L	Z	N	S
S	T	N	A	R	J	S	Y	I	H	D	L	T	G	S
P	I	C	O	W	B	K	P	D	N	C	S	M	X	G
E	A	S	T	A	R	F	E	L	L	E	X	D	F	N
L	L	T	V	E	R	U	S	H	K	A	E	Q	W	F
L	B	L	U	C	H	I	G	H	M	A	S	T	E	R
G	R	A	N	N	Y	F	L	O	S	S	D	M	V	E

